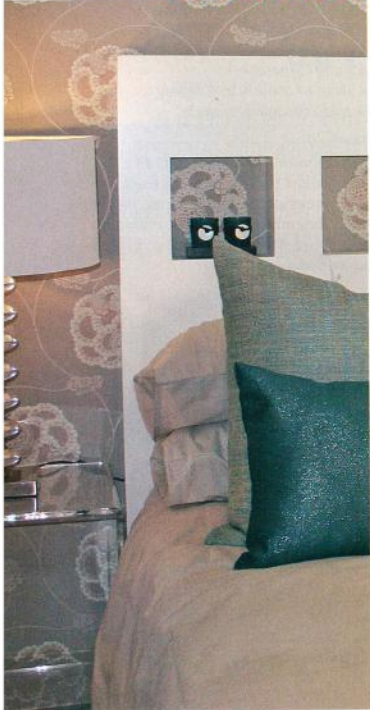


To accentuate the room's modern interior, special care went into selecting the decorative lamps and headboards. In essence the home is retro and modern in design and style. The contemporary theme of the home is further enhanced by the clean lines and careful layout which merge gracefully to produce areas that are spacious and open. The open-plan kitchen creates a flow between the kitchen and informal

dining area, creating a living space that is functional, boasting cabinetry that is designed to save space and offer an abundance of counter-top space for easy food preparation. The entire kitchen is designed to emit a high tech ambience, yet at the same time, it is warm and practical. The chosen furniture in the lounge features solid colours broken by brightly coloured retro inspired cushions

patterned with names of local cities in South Africa. This splendour-filled bachelor abode boasts a unique sense of style that is extremely modern, inviting and warm. Stacey-Lee ensured that the actual design and structure of the home complements the interior spaces in a timeless yet fashionable way making this bachelor pad a place called home.



A trendy Bachelor Pad

Retro chic and contemporary styling best describes the San Antonella bachelor pad of Durbanite, Jared Schafer. Chia Kougianos paid him a visit.

Design Ahead interior designer, Stacey-Lee was responsible for the stylish décor of this stylish bachelor pad. If one thing stands out, it is the use of bright and opulent materials - from the kitchen counter-tops and modern bar-stools, to the different fabrics and textures - this home is filled with luxurious materials that exude trendy style.

The use of varying shades of muted earth tones and rich blues in the bedrooms gives the place a warm casual feel. A striking element of the décor is the various feature walls that can be found in each bedroom. Stacey-Lee selected a single wall and by adding different textured and patterned wallpaper, created a focal point for the room transforming the wall into a vibrant fashion statement.

Photographer: Ryllie-Jade Cheltn

Design Ahead
Interior Design & Decorating

Contact: Stacey Cell: 082 923 4114

www.designahead.co.za